



GMT MONTHLY MEMBERSHIP PROGRESS REPORT

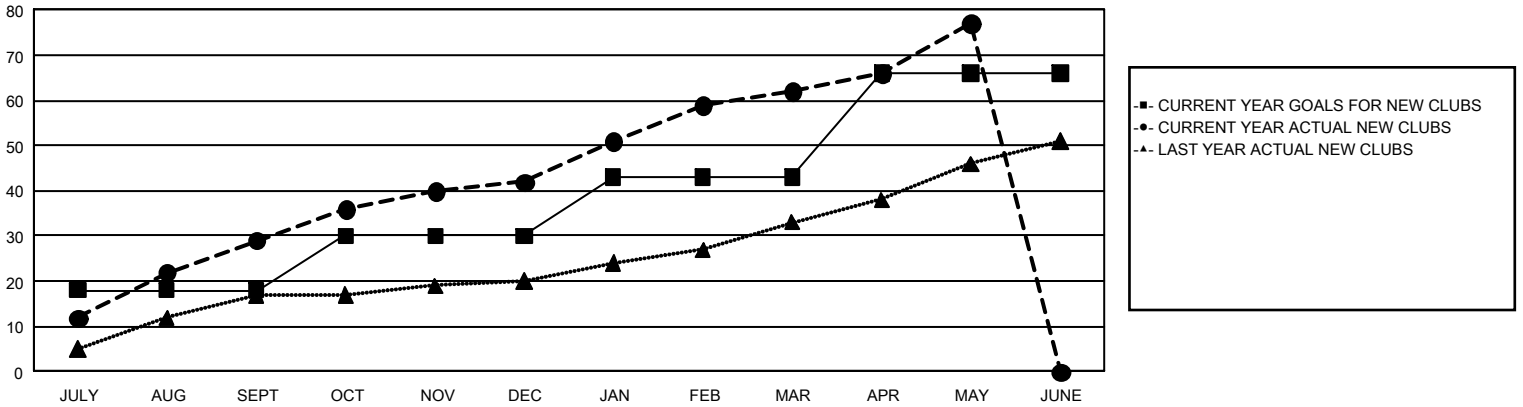
GAT Constitutional Area 7

Results as of: 5/31/2024

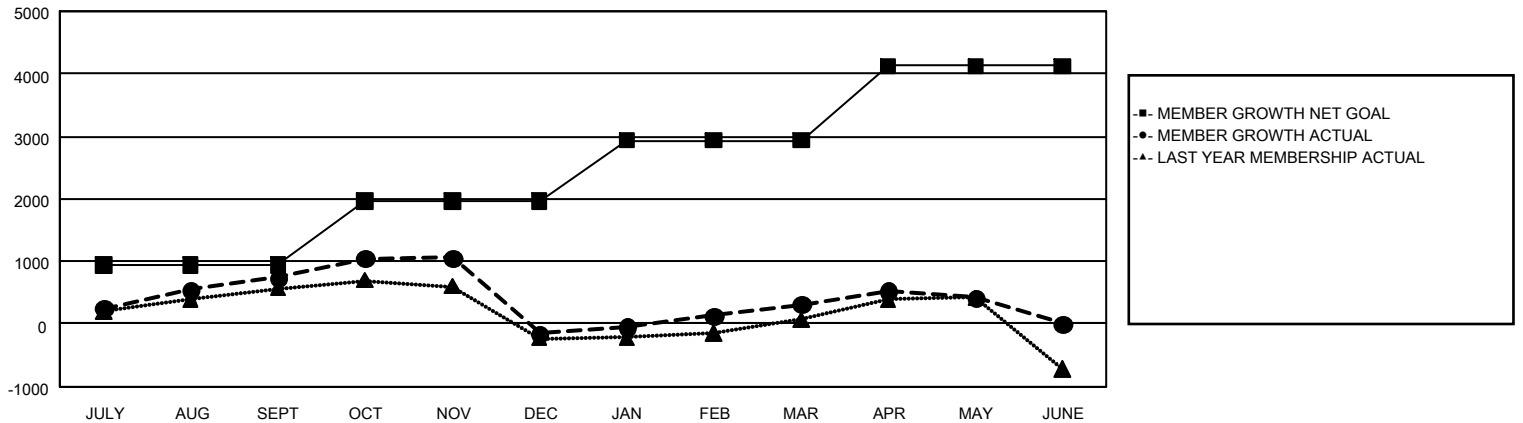
REPORT DOES NOT INCLUDE CLUBS IN UNDISTRICTED AREAS.

Clubs				Members			
RESULTS FOR 2023-2024				RESULTS FOR 2023-2024			
QUARTER	NEW CLUB GOAL	NEW CLUBS	DROPPED CLUBS	QUARTER	MEMBER GROWTH NET GOAL	MEMBER GROWTH ACTUAL	DROPPED MEMBERS ACTUAL (including transfers)
JULY/AUG/SEPT	18	29	21	JULY/AUG/SEPT	937	2,190	1,265
OCT/NOV/DEC	12	13	6	OCT/NOV/DEC	1,029	1,487	2,275
JAN/FEB/MAR	13	20	3	JAN/FEB/MAR	968	1,720	1,105
APR/MAY/JUNE	23	15	3	APR/MAY/JUNE	1,194	1,276	1,004

GOALS AND ACTUAL NEW CLUBS CUMULATIVE



GOALS AND ACTUAL MEMBERS CUMULATIVE



DROPPED CLUBS: 33	1,243 CLUBS OF 1,919 ADDED 1 OR MORE NEW MEMBERS	<u>GENDER DISTRIBUTION</u> MALE 24,238 (56.49%) FEMALE 18,642 (43.45%)
<u>DROPPED MEMBERS</u> DECEASED 437 CLUB CANCELLED 68 OTHER 5,099 <hr/> TOTAL 5,604	CLICK HERE FOR CUMULATIVE MEMBERSHIP DATA	TOTAL FAMILY UNIT MEMBERS 7,207 FAMILY MEMBERS PAYING HALF DUES 3,877